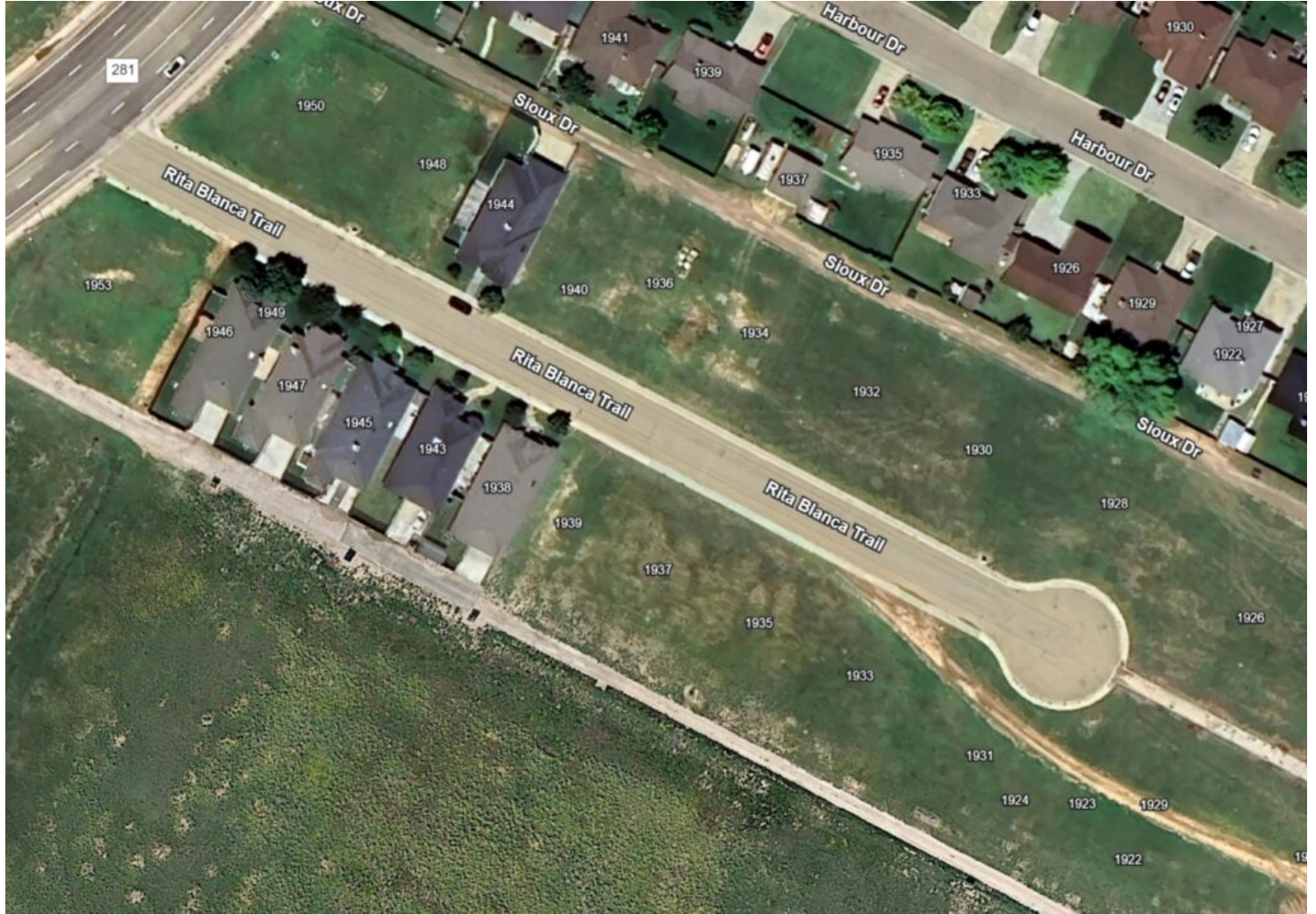


*Dalhart's Trusted Name in
Real Estate Since 1976*



Call Today! [806-249-6759](tel:806-249-6759)

Rita Blanca Lots



Property Details

City: **Dalhart**

County: **TX**

List Price: **\$35,000 to \$70,500**

Lot Size: **7,152 to 16,971**

Bed / Bath: /

Property Description

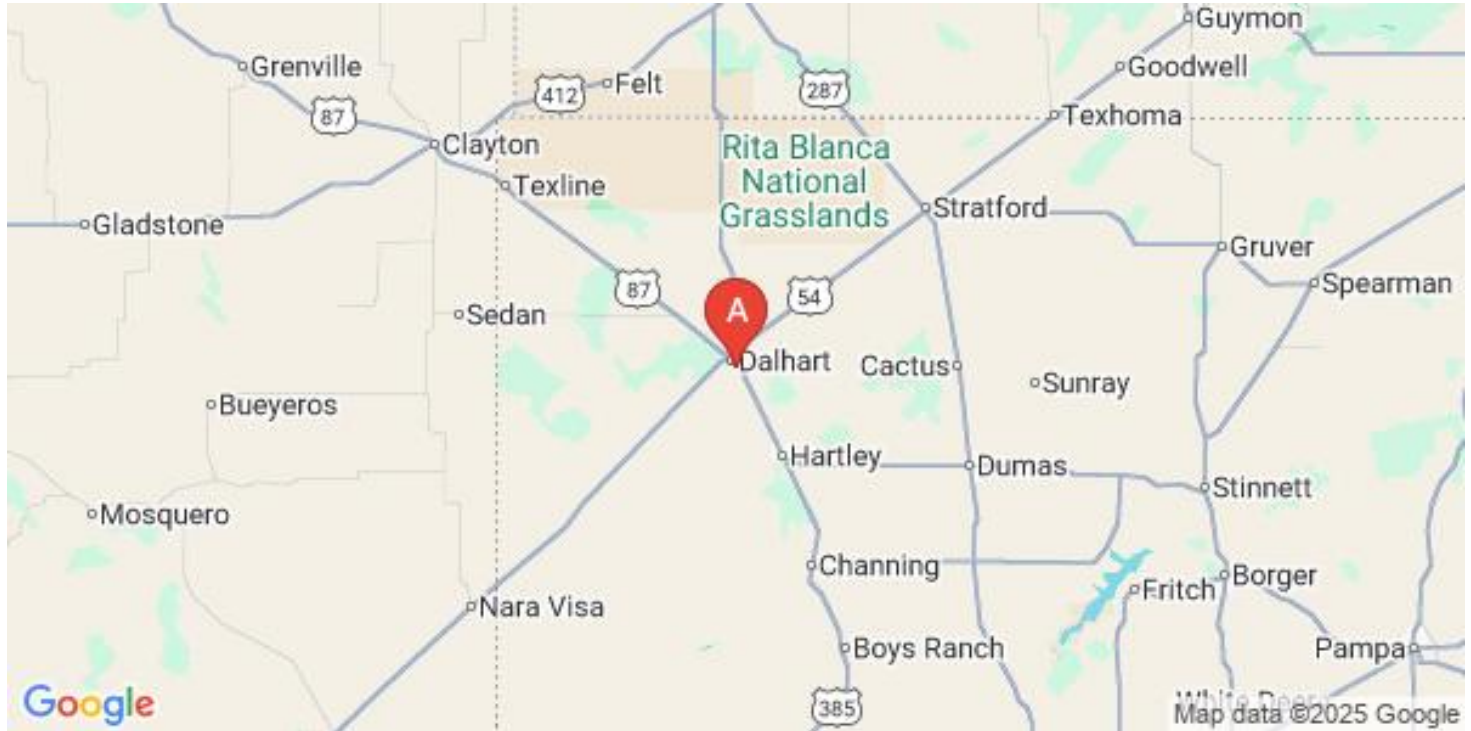
Discover these **prime lots** offering the perfect opportunity to create the home you've always wanted. Located in a **fantastic neighborhood** near **schools, the ballpark, and the Rita Blanca Coliseum**, you'll enjoy both convenience and community.

Whether you're planning your forever home or an investment property, these lots are a must-see! Contact us today for more information and take the first step toward making your vision a reality.

14 lots of varying sizes, restrictions, and prices. Prices start at \$35,000 up to \$70,500. Please see supporting documents to see pricing details.

Blk 4, Seminole trail Subdivision Unit 1, Dalhart, Hartley County, Texas

Rita Blanca Dalhart TX 79022-1533



Property Images

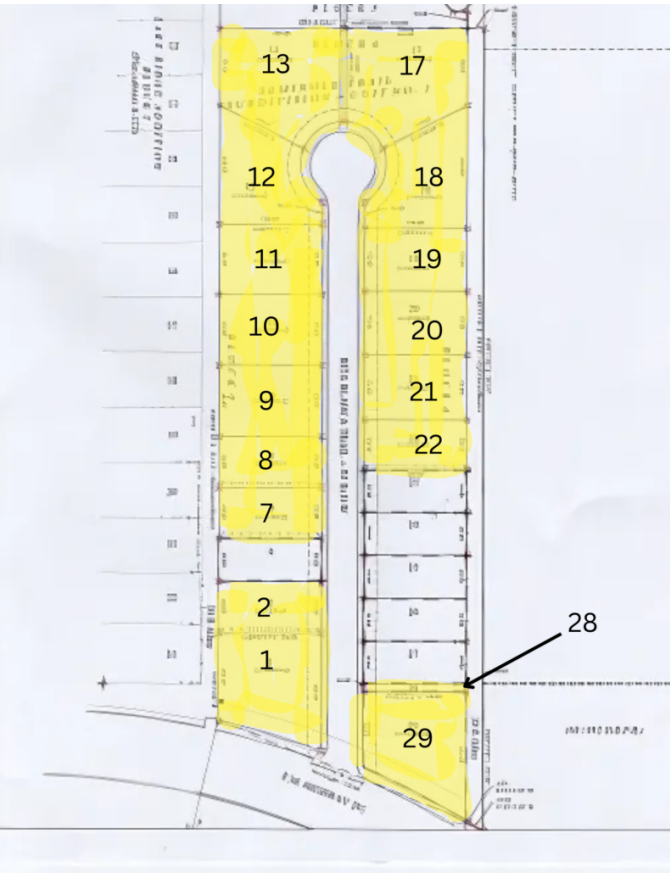
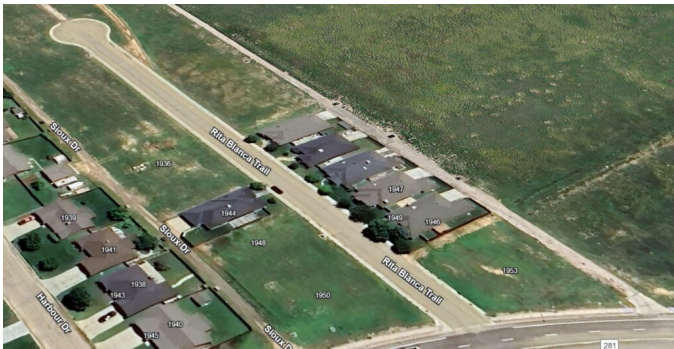
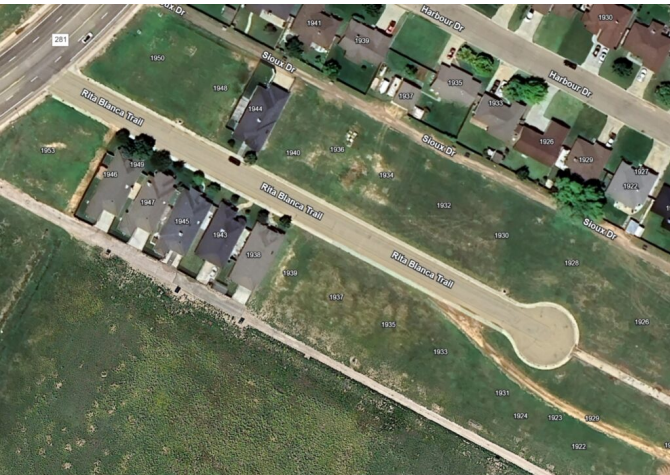


Exhibit A
Page 1
Rita Blanca Trail

Re: Rita Blanca Trail – Garden & Single Family Residential Lot Prices
Effective January, 2018

West Patio & Lot Prices:	East Patio & Lot Prices:	Cul-de-sac Lot Prices:
# 1 \$59,700 14,435 sq. ft.	#19 \$40,700 9,060 sq. ft.	#12 \$50,600 11,829 sq. ft.
# 2 \$35,000 7,200 sq. ft.	#20 \$40,700 9,060 sq. ft.	#13 \$68,900 16,971 sq. ft.
# 3 eliminated via Re-Plat	#21 \$40,800 9,060 sq. ft.	#14 eliminated via Re-Plat
# 4 sold 6,000 sq. ft.	#22 \$37,000 7,152 sq. ft.	#15 eliminated via Re-Plat
# 5 eliminated via Re-Plat	#23 sold 6,000 sq. ft.	#16 eliminated via Re-Plat
# 6 eliminated via Re-Plat	#24 sold 6,000 sq. ft.	#17 \$70,500 16,956 sq. ft.
# 7 \$35,000 7,200 sq. ft.	#25 sold 6,000 sq. ft.	#18 \$54,300 12,356 sq. ft.
# 8 \$35,000 7,200 sq. ft.	#26 sold 6,000 sq. ft.	
# 9 \$43,100 10,032 sq. ft.	#27 sold 6,000 sq. ft.	
#10 \$43,100 10,032 sq. ft.	#28 \$ 6,156 1,200 sq. ft. to sell & combine with #29	
#11 \$43,200 10,032 sq. ft.	#29 \$ 59,366 14,305 sq. ft.	

C.C. 3-24-25

